

CANDIDATE
NAME

CENTRE
NUMBER

--	--	--	--	--

CANDIDATE
NUMBER

--	--	--	--

PAKISTAN STUDIES

2059/02

Paper 2 The Environment of Pakistan

October/November 2015

1 hour 30 minutes

Candidates answer on the Question Paper.

READ THESE INSTRUCTIONS FIRST

Write your name, Centre number and candidate number in the spaces provided.

Write in dark blue or black pen.

Do not use staples, paper clips, glue or correction fluid.

DO NOT WRITE IN ANY BARCODES.

Answer any **three** questions.

The Insert contains Photographs A and B for Question 1 and Photographs C and D for Question 5.

The Insert is **not** required by the Examiner.

The number of marks is given in brackets [] at the end of each question or part question.

This document consists of **20** printed pages, **4** blank pages and **1** insert.

1 (a) (i) Describe **two** ways in which water supplies can be polluted.

- 1
-
- 2
-[2]

(ii) For **one** of these ways explain how the problem caused by pollution can be solved.

-
-
-
-[2]

(b) Study Fig. 1, a map showing the major rivers of Pakistan.

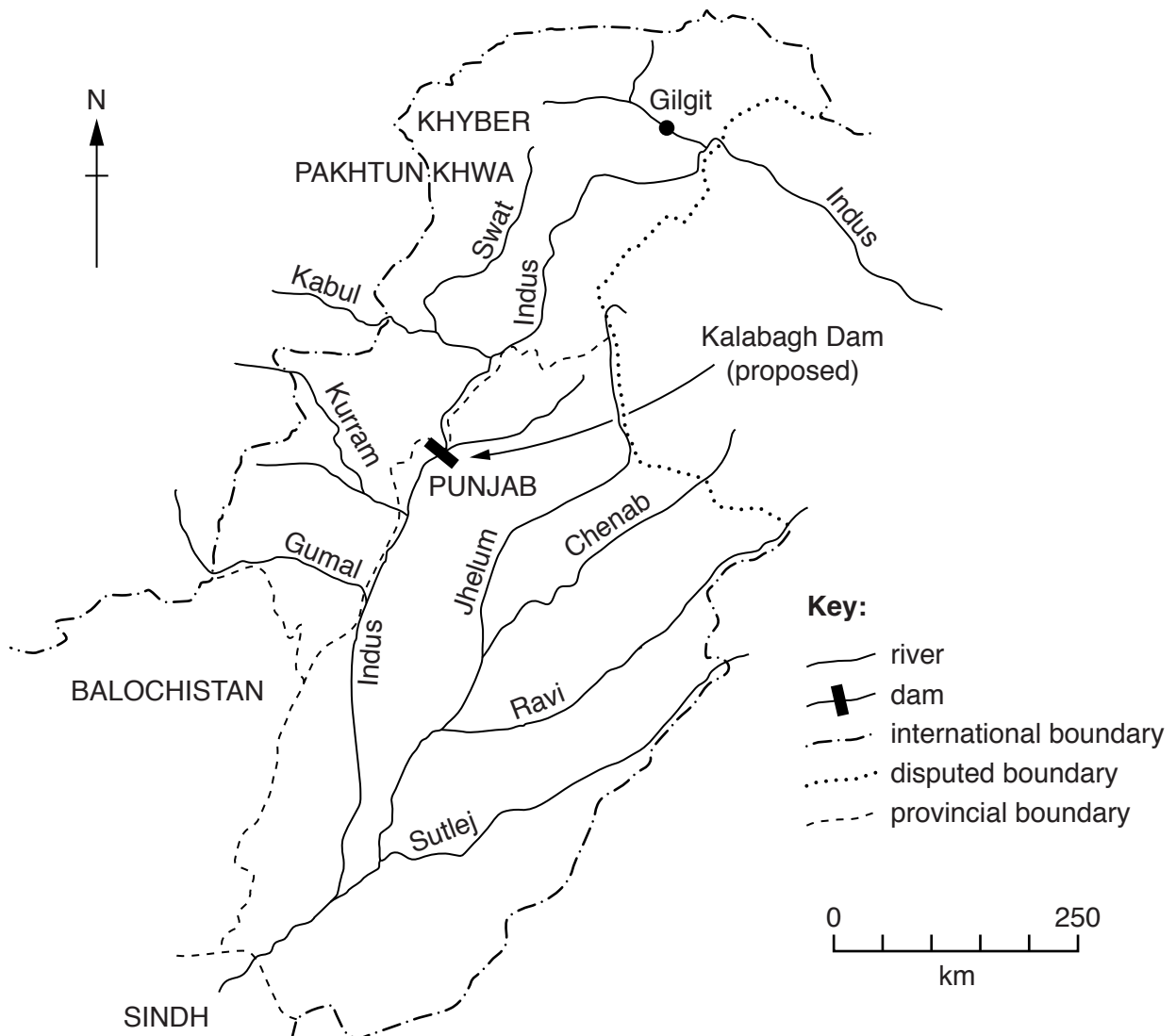


Fig. 1

(i) Locate the following two dams **on the map**:

- Warsak (**W**);
- Diamir Bhasha (under construction) (**D**). This dam is 150 km downstream of Gilgit.

Mark their positions using the appropriate symbol from the key and label each with the correct letter. [2]

(ii) What are the advantages of building a dam at the Diamir Bhasha site?

.....
.....
.....
.....
.....
.....
.....
.....
.....
.....[4]

(iii) Read the following article about the proposal to build a new dam, the Kalabagh, on the River Indus at the point indicated on the map, Fig. 1.

Kalabagh Dam – A Controversial Issue

Punjab wants the Kalabagh Dam to be built, but there is opposition to the project from a section of the population in Sindh, Khyber Pakhtunkhwa and Balochistan.

Those who are opposed to the dam argue that it might be beneficial for Punjab and harmful for the other provinces.

The Kalabagh Dam issue is difficult to resolve at this stage.

Describe the disputes over water availability and use which can arise from proposals to build dams at sites such as this.

.....
.....
.....
.....
.....
.....
.....
.....
.....[4]

(c) Study Photographs A and B (Insert), which show typical scenes of deforestation.

(i) State **one** use of timber from forests that have been cut down.

.....[1]

(ii) Using the photographs and your own knowledge, describe the effects of deforestation on the natural environment.

.....
.....
.....
.....
.....
.....
.....
.....
.....
.....
.....[4]

2 (a) (i) Study Fig. 2, which shows the usage of natural gas in Pakistan in the year 2010–11.

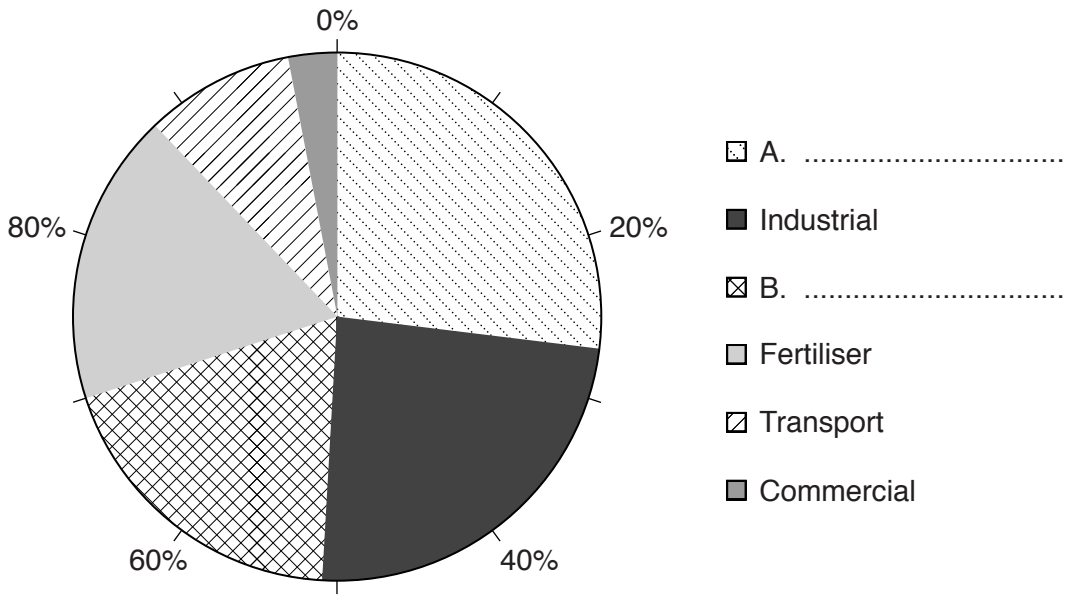


Fig. 2

In the key, name the activities A and B which are two of the main users of natural gas in Pakistan. [2]

(ii) State two ways in which gas is transported to homes in Pakistan.

1

2 [2]

(b) Study Fig. 3, which is a graph showing usage of electricity in Gigawatt-hours by three different sectors over a ten-year period.

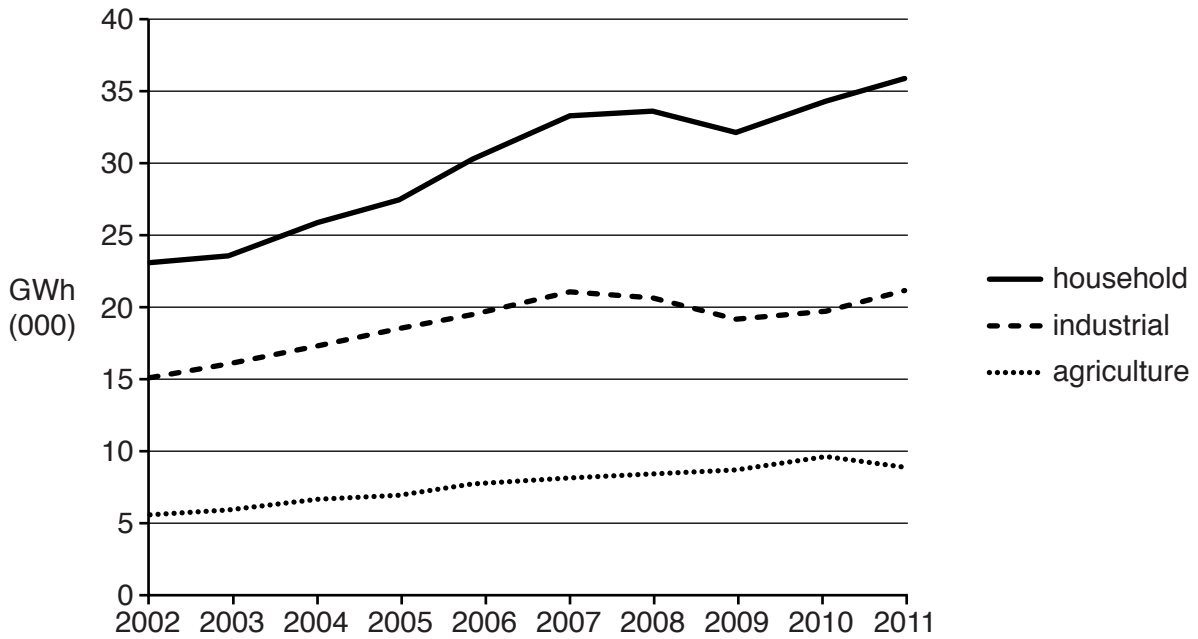


Fig. 3

(i) What was the industrial usage of electricity in 2004?

.....[1]

(ii) To what extent are the changes over the ten years similar for the three sectors?

.....

[3]

(iii) Loadshedding is the deliberate, temporary reduction in supply of electricity from a power station. Explain the effect of loadshedding on industry and business.

.....
.....
.....
.....
.....
.....
.....
.....
.....[4]

(c) (i) A. From the list below, circle **one** place which regularly experiences the highest temperatures in June in Pakistan.

- Quetta Karachi Jacobabad Abbottabad Larkana Zhob

B. Which range best describes the highest temperatures recorded? Put a tick in **one** of the boxes below.

Temperature (°C)	TICK
46–48	
49–51	
52–54	

[2]

(ii) Explain why the place you have named in (i) is the hottest place in Pakistan.

.....
.....
.....
.....[2]

- 3 (a) Study Fig. 4 and Fig. 5, which give information for rice production and the area over which it is sown during four years.

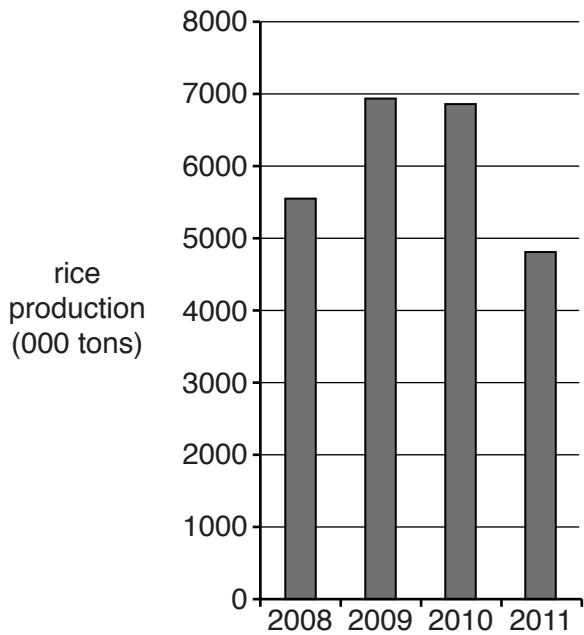


Fig. 4

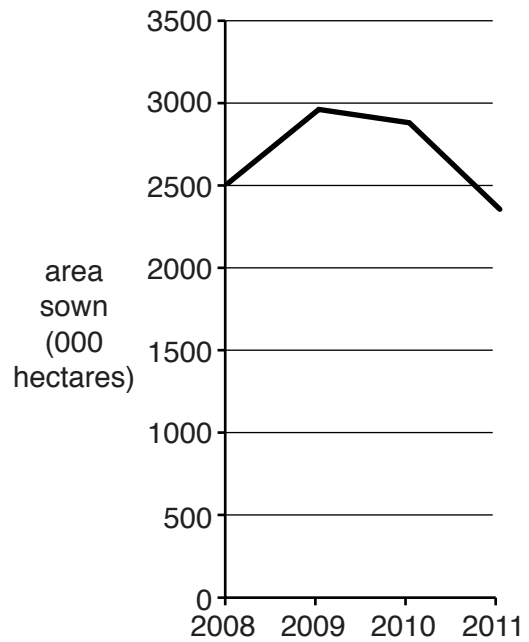


Fig. 5

- (i) What was the production in 2008?

.....[1]

- (ii) What is the difference between the maximum and minimum area sown during these years?

.....[1]

- (iii) Suggest **two** reasons why rice production varies from year to year.

1

2[2]

- 4 (a) Study Fig. 7, which gives information for the Gross Domestic Product (GDP) of Pakistan in 1992 and 2012.

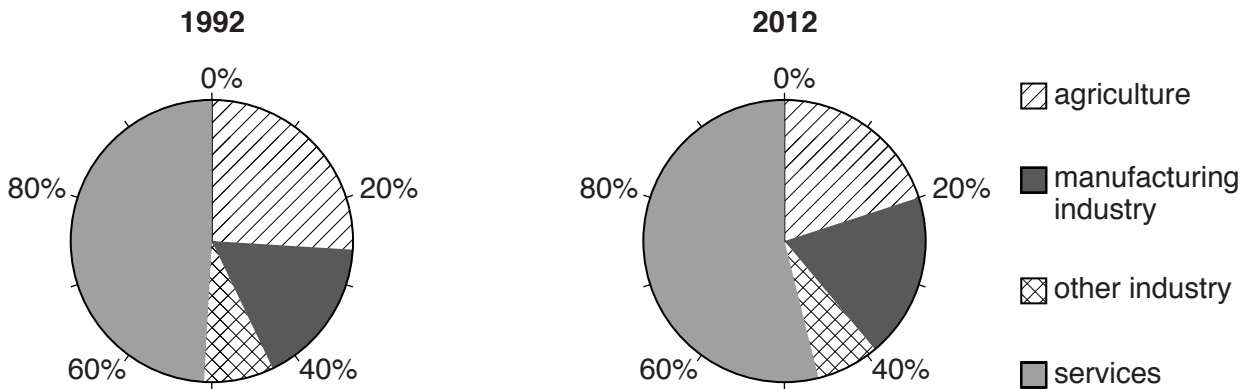


Fig. 7

- (i) What is meant by the term Gross Domestic Product (GDP)?

.....
[1]

- (ii) A. What percentage of GDP came from services in 2012?

.....

- B. What might be included in the category 'other industry'?

.....

- C. State whether the share of GDP from the following has increased, decreased, or stayed the same in the period from 1992 to 2012:

Agriculture

Manufacturing industry[3]

(b) Study Fig. 8, which shows the value of exports and imports in Pakistan in 2011.

Category	Exports (US\$ million)	Imports (US\$ million)
Animals and animal products	560	–
Vegetable products	3940	1460
Edible fats and oils	–	2590
Prepared foodstuffs	560	540
Mineral products	690	6030
Chemicals, incl. fertilisers	370	5050
Leather	680	–
Textiles and textile products	13490	2870
Metals	960	2290
Machinery and instruments	640	5130
Vehicles and transport	–	2190
Other	1460	3490
TOTAL	23350	31640

Fig. 8

(i) Name a textile product exported by Pakistan.

.....[1]

(ii) How much greater is the total value of all imports than the total value of all exports?

.....[1]

(iii) Use Fig. 8 to describe **three** differences between goods Pakistan exports and imports.

.....

[3]

(iv) Explain **two** problems for Pakistan’s economy caused by the differences you have described in your answer to part (iii).

Problem

.....

.....

.....

Problem

.....

.....

.....[4]

(c) (i) State **one** main trading partner with Pakistan for each of exports and imports.

Exports

Imports[2]

(ii) Describe a method of transport that could be used for trade with **one** of the countries stated in your answer to part (i). Suggest the benefits of using this method of transport.

Method

Benefits

.....

.....

.....

.....

.....[4]

5 (a) Study Fig. 9, which is a map giving information about cotton textile industries in Pakistan.

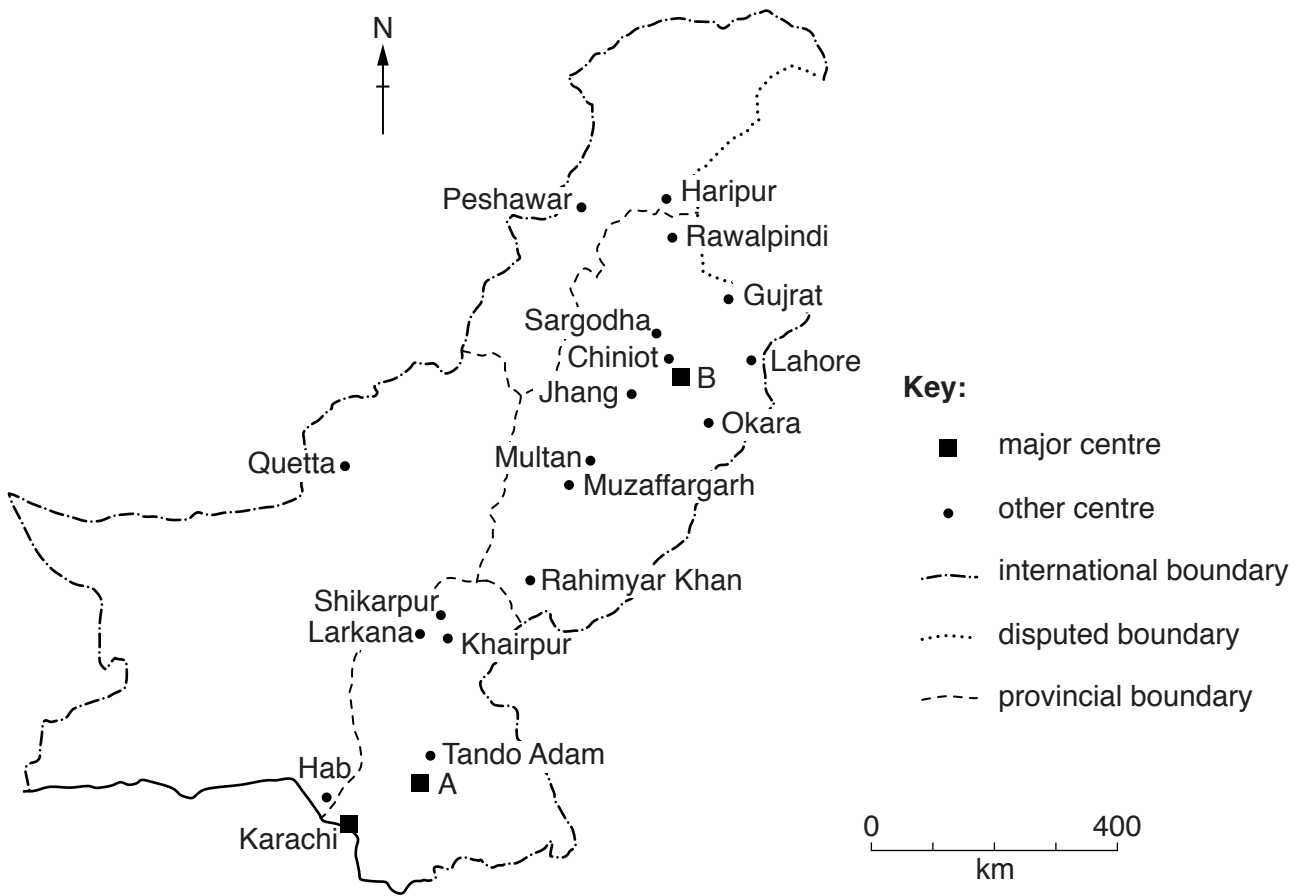


Fig. 9

(i) Name **one** of the major centres of the cotton industry, A or B.

.....[1]

(ii) Suggest reasons why the cotton textile industry is distributed as shown in Fig. 9.

.....
.....
.....
.....
.....
.....
.....[3]

BLANK PAGE

Permission to reproduce items where third-party owned material protected by copyright is included has been sought and cleared where possible. Every reasonable effort has been made by the publisher (UCLES) to trace copyright holders, but if any items requiring clearance have unwittingly been included, the publisher will be pleased to make amends at the earliest possible opportunity.

To avoid the issue of disclosure of answer-related information to candidates, all copyright acknowledgements are reproduced online in the Cambridge International Examinations Copyright Acknowledgements Booklet. This is produced for each series of examinations and is freely available to download at www.cie.org.uk after the live examination series.

Cambridge International Examinations is part of the Cambridge Assessment Group. Cambridge Assessment is the brand name of University of Cambridge Local Examinations Syndicate (UCLES), which is itself a department of the University of Cambridge.